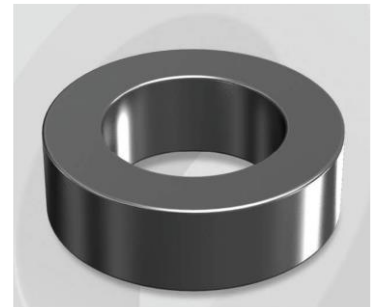


# CK358019G

## Electrical Characteristics

Material	Permeability ( $\mu$ )	AL $\pm$ 8% (nH/N <sup>2</sup> )	DCB (% min) @ 200 Oe	Coreloss (mW/cm <sup>2</sup> , max) @ 50kHz, 500G
Mega Flux	19	18	77.3	170

OD : 358



## Core Dimensions

Dimensions		Uncoated		Coated		Color	Packaging
		(mm)	(inch)	(mm)	(inch)		
OD	(Max)	35.81	1.410	36.70	1.445	Black	Box Qty = 240 pcs
ID	(min)	22.35	0.880	21.50	0.846		
HT	(max)	10.46	0.412	11.28	0.444		

## Physical Characteristics

Cross Section (A)	Path Length (l)	Window Area (Wa)	Volume (V)	Breakdown Voltage (Vac)
0.678 cm <sup>2</sup>	8.98 cm	3.64 cm <sup>2</sup>	6.0884 cm <sup>3</sup>	1,000
0.1051 in <sup>2</sup>	3.54 in	718,374 cmil	0.372 in <sup>3</sup>	

## Winding Information

0% Winding length/turn (cm)		
3.776		
40% winding factor Surface Area (cm <sup>2</sup> )		
56.09		
40% Wound Di.(mm)		
OD	ID	HT
42.15	14.09	17.71

For Your Reference Only

## Typical DC Bias Performance

