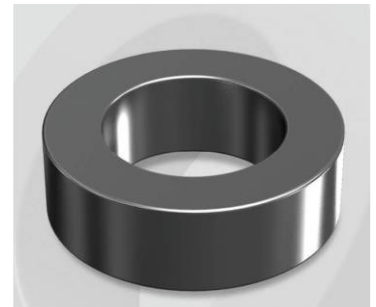


# CK343026G

## Electrical Characteristics

Material	Permeability ( $\mu$ )	AL $\pm$ 8% (nH/N <sup>2</sup> )	DCB (% min) @ 200 Oe	Coreloss (mW/cm <sup>3</sup> , max) @ 50kHz, 500G
Mega Flux	26	16	64.4	170

OD : 343



## Core Dimensions

Dimensions		Uncoated		Coated		Color	Packaging
		(mm)	(inch)	(mm)	(inch)		
OD	(Max)	34.29	1.350	35.20	1.386	Black	Box Qty = 280 pcs
ID	(min)	23.37	0.920	22.60	0.890		
HT	(max)	8.89	0.350	9.83	0.387		

## Physical Characteristics

Cross Section (A)	Path Length (l)	Window Area (Wa)	Volume (V)	Breakdown Voltage (Vac)
0.454 cm <sup>2</sup>	8.95 cm	4.01 cm <sup>2</sup>	4.0633 cm <sup>3</sup>	1,000
0.0704 in <sup>2</sup>	3.52 in	791,395 cmil	0.248 in <sup>3</sup>	

## Winding Information

0% Winding length/turn (cm)		
3.226		
40% winding factor Surface Area (cm <sup>2</sup> )		
52.34		
40% Wound Di.(mm)		
OD	ID	HT
41.08	14.79	16.67

For Your Reference Only

## Typical DC Bias Performance

