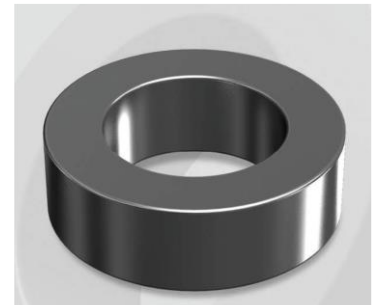


CK1625060G

Electrical Characteristics

Material	Permeability (μ)	AL \pm 8% (nH/N ²)	DCB (% min) @ 50 Oe	Coreloss (mW/cm ³ , max) @50kHz, 100G
Mega Flux	60	184	81.0	10

OD : 1625



Core Dimensions

Dimensions		Uncoated		Coated		Color	Packaging
		(mm)	(inch)	(mm)	(inch)		
OD	(Max)	165.00	6.496	167.20	6.583	Black	Box Qty = 4 pcs
ID	(min)	88.90	3.500	86.90	3.421		
HT	(max)	25.40	1.000	27.30	1.075		

Physical Characteristics

Cross Section (A)	Path Length (l)	Window Area (Wa)	Volume (V)	Breakdown Voltage (Vac)
9.460 cm ²	38.65 cm	59.31 cm ²	365.629 cm ³	1,000
1.466 in ²	15.22 in	11,705,189 cmil	22.311 in ³	

Winding Information

0% Winding length/turn (cm)		
13.490		
40% winding factor Surface Area (cm ²)		
916.95		
40% Wound Di.(mm)		
OD	ID	HT
188.62	56.89	53.02

For Your Reference Only

Typical DC Bias Performance

