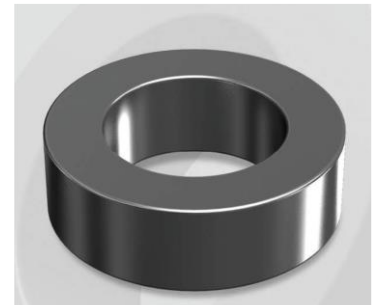


# CK1625019G

## Electrical Characteristics

Material	Permeability ( $\mu$ )	AL $\pm$ 8% (nH/N <sup>2</sup> )	DCB (% min) @ 50 Oe	Coreloss (mW/cm <sup>2</sup> , max) @50kHz, 100G
Mega Flux	19	58	88.3	11

OD : 1625



## Core Dimensions

Dimensions		Uncoated		Coated		Color	Packaging
		(mm)	(inch)	(mm)	(inch)		
OD	(Max)	165.00	6.496	167.20	6.583	Black	Box Qty = 4 pcs
ID	(min)	88.90	3.500	86.90	3.421		
HT	(max)	25.40	1.000	27.30	1.075		

## Physical Characteristics

Cross Section (A)	Path Length (l)	Window Area (Wa)	Volume (V)	Breakdown Voltage (Vac)
9.460 cm <sup>2</sup>	38.65 cm	59.31 cm <sup>2</sup>	365.629 cm <sup>3</sup>	1,000
1.466 in <sup>2</sup>	15.22 in	11,705,189 cmil	22.311 in <sup>3</sup>	

## Winding Information

0% Winding length/turn (cm)		
13.490		
40% winding factor Surface Area (cm <sup>2</sup> )		
916.95		
40% Wound Di.(mm)		
OD	ID	HT
188.62	56.89	53.02

For Your Reference Only

## Typical DC Bias Performance

