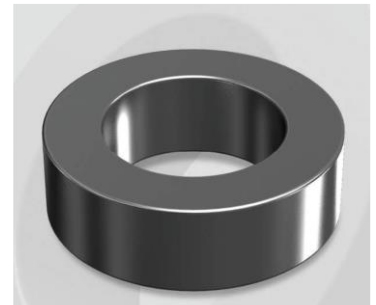


# CK1340026G

## Electrical Characteristics

Material	Permeability ( $\mu$ )	AL $\pm$ 8% (nH/N <sup>2</sup> )	DCB (% min) @ 50 Oe	Coreloss (mW/cm <sup>2</sup> , max) @ 50kHz, 100G
Mega Flux	26	108	86.5	10

OD : 1340



## Core Dimensions

Dimensions		Uncoated		Coated		Color	Packaging
		(mm)	(inch)	(mm)	(inch)		
OD	(Max)	132.50	5.217	134.20	5.283	Black	Box Qty = 3 pcs
ID	(min)	78.60	3.094	77.00	3.031		
HT	(max)	40.60	1.598	42.00	1.654		

## Physical Characteristics

Cross Section (A)	Path Length (l)	Window Area (Wa)	Volume (V)	Breakdown Voltage (Vac)
10.694 cm <sup>2</sup>	32.42 cm	46.57 cm <sup>2</sup>	346.699 cm <sup>3</sup>	1,000
1.658 in <sup>2</sup>	12.76 in	9,190,102 cmil	21.156 in <sup>3</sup>	

## Winding Information

0% Winding length/turn (cm)		
14.120		
40% winding factor Surface Area (cm <sup>2</sup> )		
747.18		
40% Wound Di.(mm)		
OD	ID	HT
153.59	50.41	64.99

For Your Reference Only

## Typical DC Bias Performance

