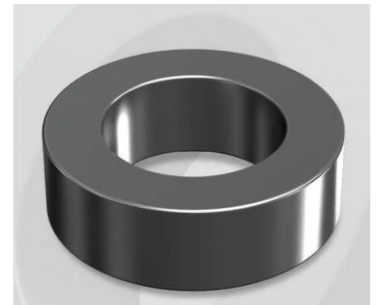


CK127060G

Electrical Characteristics

Material	Permeability (μ)	AL \pm 8% (nH/N ²)	DCB (% min) @ 100 Oe	Coreloss (mW/cm ³ , max) @ 50kHz, 1000G
Mega Flux	60	27	59.8	710

OD : 127



Core Dimensions

Dimensions		Uncoated		Coated		Color	Packaging
		(mm)	(inch)	(mm)	(inch)		
OD	(Max)	12.70	0.500	13.46	0.530	Black	Box Qty = 4,000 pcs
ID	(min)	7.62	0.300	6.99	0.275		
HT	(max)	4.75	0.187	5.51	0.217		

Physical Characteristics

Cross Section (A)	Path Length (l)	Window Area (Wa)	Volume (V)	Breakdown Voltage (Vac)
0.114 cm ²	3.12 cm	0.383 cm ²	0.3557 cm ³	1,000
0.01767 in ²	1.228 in	75,587 cmil	0.0217 in ³	

Winding Information

0% Winding length/turn (cm)		
1.749		
40% winding factor Surface Area (cm ²)		
8.00		
40% Wound Di.(mm)		
OD	ID	HT
15.18	4.57	7.58

For Your Reference Only

Typical DC Bias Performance

