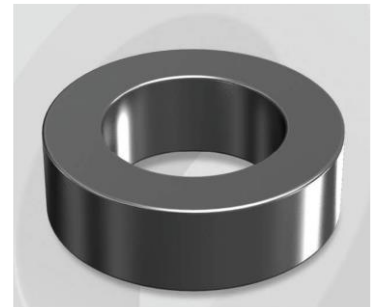


# CH358060GT

## Electrical Characteristics

Material	Permeability ( $\mu$ )	AL $\pm$ 8% (nH/N <sup>2</sup> )	DCB (% min) @ 100 Oe	Coreloss (mW/cm <sup>2</sup> , max) @ 50kHz, 1000G
High Flux GT	60	56	77.4	180

OD : 358



## Core Dimensions

Dimensions		Uncoated		Coated		Color	Packaging
		(mm)	(inch)	(mm)	(inch)		
OD	(Max)	35.81	1.410	36.70	1.445	Black	Box Qty = 240 pcs
ID	(min)	22.35	0.880	21.50	0.846		
HT	(max)	10.46	0.412	11.28	0.444		

## Physical Characteristics

Cross Section (A)	Path Length ( $l$ )	Window Area (Wa)	Volume (V)	Breakdown Voltage (Vac)
0.678 cm <sup>2</sup>	8.98 cm	3.64 cm <sup>2</sup>	6.0884 cm <sup>3</sup>	1,000
0.105 in <sup>2</sup>	3.535 in	718,374 cmil	0.3715 in <sup>3</sup>	

## Winding Information

0% Winding length/turn (cm)		
3.776		
40% winding factor Surface Area (cm <sup>2</sup> )		
56.09		
40% Wound Di.(mm)		
OD	ID	HT
42.15	14.09	17.71

For Your Reference Only

## Typical DC Bias Performance

