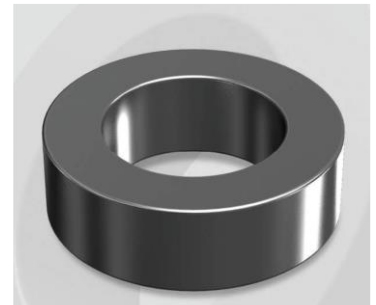


CH252060GT

Electrical Characteristics

Material	Permeability (μ)	AL \pm 8% (nH/N ²)	DCB (% min) @ 100 Oe	Coreloss (mW/cm ² , max) @ 50kHz, 1000G
High Flux GT	60	62	77.4	180

OD : 252



Core Dimensions

Dimensions		Uncoated		Coated		Color	Packaging
		(mm)	(inch)	(mm)	(inch)		
OD	(Max)	25.20	0.992	26.00	1.024	Black	Box Qty = 360 pcs
ID	(min)	14.60	0.575	13.90	0.547		
HT	(max)	10.00	0.394	10.80	0.425		

Physical Characteristics

Cross Section (A)	Path Length (l)	Window Area (Wa)	Volume (V)	Breakdown Voltage (Vac)
0.504 cm ²	6.10 cm	1.52 cm ²	3.07 cm ³	1,000
0.078 in ²	2.40 in	299,980 cmil	0.188 in ³	

Winding Information

0% Winding length/turn (cm)		
3.370		
40% winding factor Surface Area (cm ²)		
30.39		
40% Wound Di.(mm)		
OD	ID	HT
29.45	9.11	14.92

For Your Reference Only

Typical DC Bias Performance

