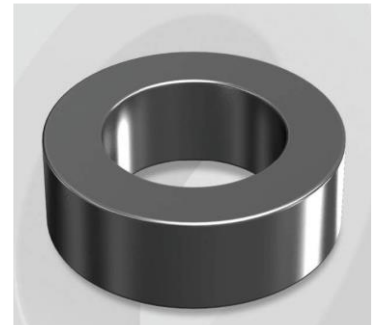


# HS270060G

## Electrical Characteristics

Material	Permeability (μ)	AL ± 8% (nH/N <sup>2</sup> )	DCB (% min) @ 100 Oe	Coreloss (mW/cm <sup>2</sup> , max) @ 50kHz, 1000G
HS	60	75	59.8	290

OD : 270



## Core Dimensions

Dimensions		Uncoated		Coated		Color	Packaging
		(mm)	(inch)	(mm)	(inch)		
OD	(Max)	26.92	1.060	27.70	1.091	Black	Box Qty = 360 pcs
ID	(min)	14.73	0.580	14.10	0.555		
HT	(max)	11.18	0.440	11.99	0.472		

## Physical Characteristics

Cross Section (A)	Path Length (ℓ)	Window Area (Wa)	Volume (V)	Breakdown Voltage (Vac)
0.654 cm <sup>2</sup>	6.35 cm	1.56 cm <sup>2</sup>	4.152 cm <sup>3</sup>	1,000
0.1014 in <sup>2</sup>	2.50 in	308,000 cmil	0.2534 in <sup>3</sup>	

## Winding Information

AWG Wire No. Dia. (cm)		Single Layer Turn Rdc. (Ω)		AWG Wire No. Dia. (cm)		Single Layer Turn Rdc. (Ω)		Winding length/turn (cm)		
12	0.213	16	0.00367	21	0.0785	47	0.0759	3.758		
13	0.190	18	0.00514	22	0.0701	53	0.107			
14	0.171	20	0.00715	23	0.0632	59	0.149	40% winding factor Surface Area (cm <sup>2</sup> )		
15	0.153	23	0.01000	24	0.0566	66	0.209			
16	0.137	26	0.0141	25	0.0505	74	0.294	34.42		
17	0.122	29	0.0197	26	0.0452	83	0.414			
18	0.109	33	0.0276	27	0.0409	93	0.575	40% Wound Di.(mm)		
19	0.0980	37	0.0387	28	0.0366	104	0.812			
20	0.0879	42	0.0541	29	0.0330	115	1.11	OD	ID	HT
								31.16	9.23	16.16

## Typical DC Bias Performance

