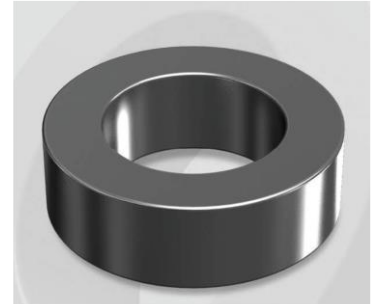


CS777090G

Electrical Characteristics

Material	Permeability (μ)	AL \pm 8% (nH/N ²)	DCB (% min) @ 30 Oe	Coreloss (mW/cm ³ , max) @ 50kHz, 300G
SENDUST	90	102	64.4	73

OD : 777



Core Dimensions

Dimensions		Uncoated		Coated		Color	Packaging
		(mm)	(inch)	(mm)	(inch)		
OD	(Max)	77.80	3.063	78.90	3.106	Black	Box Qty = 40 pcs
ID	(Min)	49.23	1.938	48.00	1.890		
HT	(Max)	12.70	0.500	13.97	0.550		

Physical Characteristics

Cross Section (A)	Path Length (l)	Window Area (Wa)	Volume (V)	Breakdown Voltage (Vac)
1.770 cm ²	20.0 cm	17.99 cm ²	35.40 cm ³	1,000
0.274 in ²	7.87 in	3,550,424 cmil	2.160 in ³	

Winding Information

0% Winding length/turn (cm)		
5.884		
40% winding factor Surface Area (cm ²)		
224.42		
40% Wound Di.(mm)		
OD	ID	HT
91.14	31.33	28.42

For Your Reference Only

Typical DC Bias Performance

