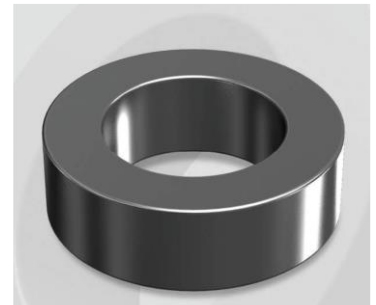


CS740026G

Electrical Characteristics

Material	Permeability (μ)	AL \pm 8% (nH/N ²)	DCB (% min) @ 200 Oe	Coreloss (mW/cm ³ , max) @ 50kHz, 100G
SENDUST	26	89	46.0	2.4

OD : 740



Core Dimensions

Dimensions		Uncoated		Coated		Color	Packaging
		(mm)	(inch)	(mm)	(inch)		
OD	(Max)	74.10	2.917	75.20	2.961	Black	Box Qty = 15 pcs
ID	(Min)	45.30	1.783	44.07	1.735		
HT	(Max)	35.00	1.378	36.27	1.428		

Physical Characteristics

Cross Section (A)	Path Length (l)	Window Area (Wa)	Volume (V)	Breakdown Voltage (Vac)
5.04 cm ²	18.38 cm	15.25 cm ²	92.64 cm ³	1,000
0.781 in ²	7.236 in	3,009,670 cmil	5.653 in ³	

Winding Information

0% Winding length/turn (cm)		
10.367		
40% winding factor Surface Area (cm ²)		
283.09		
40% Wound Di.(mm)		
OD	ID	HT
86.36	28.85	49.46

For Your Reference Only

Typical DC Bias Performance

