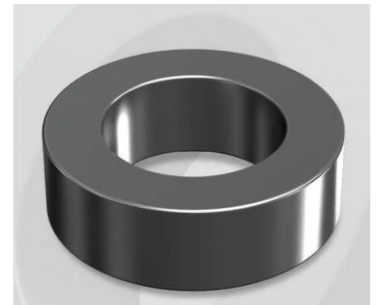


CS572060G

Electrical Characteristics

Material	Permeability (μ)	AL \pm 8% (nH/N ²)	DCB (% min) @ 50 Oe	Coreloss (mW/cm ² , max) @50kHz, 500G
SENDUST	60	75	64.4	73

OD : 572



Core Dimensions

Dimensions		Uncoated		Coated		Color	Packaging
		(mm)	(inch)	(mm)	(inch)		
OD	(Max)	57.15	2.250	58.00	2.283	Black	Box Qty = 88 pcs
ID	(Min)	35.56	1.400	34.70	1.366		
HT	(Max)	13.97	0.550	14.86	0.585		

Physical Characteristics

Cross Section (A)	Path Length (ℓ)	Window Area (Wa)	Volume (V)	Breakdown Voltage (Vac)
1.444 cm ²	14.30 cm	9.48 cm ²	20.649 cm ³	1,000
0.224 in ²	5.63 in	1,870,930 cmil	1.2600 in ³	

Winding Information

0% Winding length/turn (cm)		
5.302		
40% winding factor Surface Area (cm ²)		
133.19		
40% Wound Di.(mm)		
OD	ID	HT
66.85	22.74	25.26

For Your Reference Only

Typical DC Bias Performance

