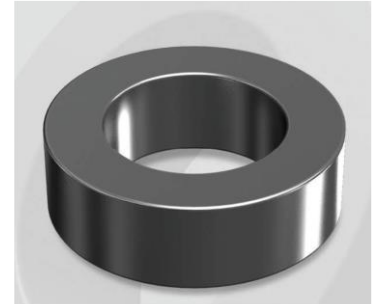


CS508090G

Electrical Characteristics

Material	Permeability (μ)	AL \pm 8% (nH/N ²)	DCB (% min) @ 30 Oe	Coreloss (mW/cm ² , max) @ 50kHz, 500G
SENDUST	90	109	64.4	73

OD : 508



Core Dimensions

Dimensions		Uncoated		Coated		Color	Packaging
		(mm)	(inch)	(mm)	(inch)		
OD	(Max)	50.80	2.000	51.70	2.035	Black	Box Qty = 96 pcs
ID	(Min)	31.75	1.250	30.90	1.217		
HT	(Max)	13.46	0.530	14.35	0.565		

Physical Characteristics

Cross Section (A)	Path Length (l)	Window Area (Wa)	Volume (V)	Breakdown Voltage (Vac)
1.250 cm ²	12.73 cm	7.50 cm ²	15.913 cm ³	1,000
0.194 in ²	5.01 in	1,480,166 cmil	0.971 in ³	

Winding Information

0% Winding length/turn (cm)		
4.950		
40% winding factor Surface Area (cm ²)		
108.52		
40% Wound Di.(mm)		
OD	ID	HT
59.57	20.23	23.62

For Your Reference Only

Typical DC Bias Performance

