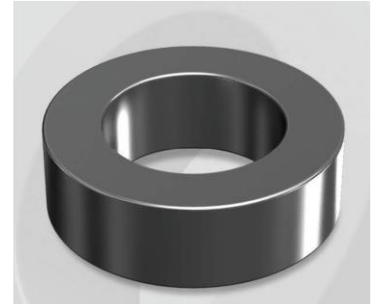


CS234075G

Electrical Characteristics

Material	Permeability (μ)	AL \pm 8% (nH/N ²)	DCB (% min) @ 40 Oe	Coreloss (mW/cm ² , max) @ 50kHz, 1000G
SENDUST	75	63	64.4	320

OD : 234



Core Dimensions

Dimensions		Uncoated		Coated		Color	Packaging
		(mm)	(inch)	(mm)	(inch)		
OD	(Max)	23.57	0.928	24.30	0.957	Black	Box Qty = 750 pcs
ID	(Min)	14.40	0.567	13.77	0.542		
HT	(Max)	8.89	0.350	9.70	0.382		

Physical Characteristics

Cross Section (A)	Path Length (l)	Window Area (Wa)	Volume (V)	Breakdown Voltage (Vac)
0.388 cm ²	5.88 cm	1.49 cm ²	2.2814 cm ³	1,000
0.06014 in ²	2.315 in	294,060 cmil	0.1392 in ³	

Winding Information

0% Winding length/turn (cm)		
2.993		
40% winding factor Surface Area (cm ²)		
26.78		
40% Wound Di.(mm)		
OD	ID	HT
27.76	9.02	13.81

For Your Reference Only

Typical DC Bias Performance

