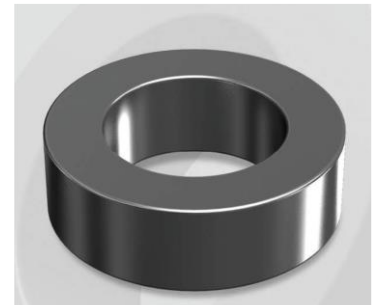


# CS203090G

## Electrical Characteristics

Material	Permeability ( $\mu$ )	AL $\pm$ 8% (nH/N <sup>2</sup> )	DCB (% min) @ 30 Oe	Coreloss (mW/cm <sup>3</sup> , max) @ 50kHz, 1000G
SENDUST	90	49	64.4	320

OD : 203



## Core Dimensions

Dimensions		Uncoated		Coated		Color	Packaging
		(mm)	(inch)	(mm)	(inch)		
OD	(Max)	20.32	0.800	21.10	0.831	Black	Box Qty = 1,368 pcs
ID	(Min)	12.70	0.500	12.07	0.475		
HT	(Max)	6.35	0.250	7.11	0.280		

## Physical Characteristics

Cross Section (A)	Path Length (ℓ)	Window Area (Wa)	Volume (V)	Breakdown Voltage (Vac)
0.2260 cm <sup>2</sup>	5.09 cm	1.140 cm <sup>2</sup>	1.1503 cm <sup>3</sup>	1,000
0.03503 in <sup>2</sup>	2.004 in	224,985 cmil	0.0702 in <sup>3</sup>	

## Winding Information

0% Winding length/turn (cm)		
2.325		
40% winding factor Surface Area (cm <sup>2</sup> )		
18.95		
40% Wound Di.(mm)		
OD	ID	HT
24.13	7.89	10.72

For Your Reference Only

## Typical DC Bias Performance

