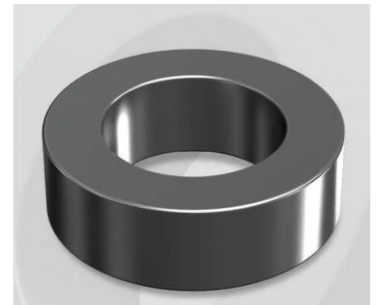


CS1333060G

Electrical Characteristics

Material	Permeability (μ)	AL \pm 8% (nH/N ²)	DCB (% min) @ 50 Oe	Coreloss (mW/cm ³ , max) @50kHz, 100G
SENDUST	60	202	64.4	2.4

OD : 1333



Core Dimensions

Dimensions		Uncoated		Coated		Color	Packaging
		(mm)	(inch)	(mm)	(inch)		
OD	(Max)	132.50	5.217	134.20	5.283	Black	Box Qty = 3 pcs
ID	(Min)	78.60	3.094	77.00	3.031		
HT	(Max)	33.00	1.299	34.40	1.354		

Physical Characteristics

Cross Section (A)	Path Length (l)	Window Area (Wa)	Volume (V)	Breakdown Voltage (Vac)
8.717 cm ²	32.4 cm	46.57 cm ²	282.61 cm ³	1,000
1.351 in ²	12.76 in	9,190,102 cmil	17.245 in ³	

Winding Information

0% Winding length/turn (cm)		
12.600		
40% winding factor Surface Area (cm ²)		
698.47		
40% Wound Di.(mm)		
OD	ID	HT
153.59	50.41	57.39

For Your Reference Only

Typical DC Bias Performance

