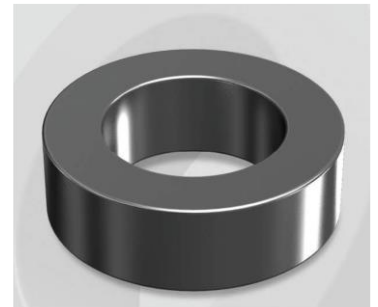


CS1013090G

Electrical Characteristics

Material	Permeability (μ)	AL \pm 8% (nH/N ²)	DCB (% min) @ 30 Oe	Coreloss (mW/cm ³ , max) @ 50kHz, 100G
SENDUST	90	138	64.4	2.4

OD : 1013



Core Dimensions

Dimensions		Uncoated		Coated		Color	Packaging
		(mm)	(inch)	(mm)	(inch)		
OD	(Max)	101.60	4.000	103.10	4.059	Black	Box Qty = 12 pcs
ID	(Min)	57.20	2.252	55.70	2.193		
HT	(Max)	13.60	0.535	14.90	0.587		

Physical Characteristics

Cross Section (A)	Path Length (l)	Window Area (Wa)	Volume (V)	Breakdown Voltage (Vac)
2.972 cm ²	24.3 cm	24.37 cm ²	72.13 cm ³	1,000
0.461 in ²	9.56 in	4,808,939 cmil	4.401 in ³	

Winding Information

0% Winding length/turn (cm)		
7.720		
40% winding factor Surface Area (cm ²)		
345.39		
40% Wound Di.(mm)		
OD	ID	HT
116.93	36.46	31.44

For Your Reference Only

Typical DC Bias Performance

