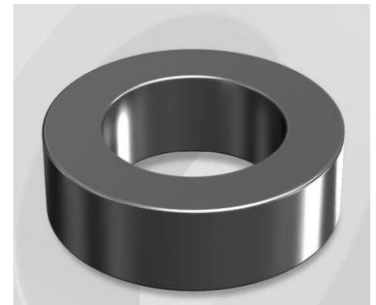


CM467125G

Electrical Characteristics

Material	Permeability (μ)	AL \pm 8% (nH/N ²)	DCB (% min) @ 20 Oe	Coreloss (mW/cm ³ , max) @ 50kHz, 500G
MPP	125	281	80.04	72

OD : 467



Core Dimensions

Dimensions		Uncoated		Coated		Color	Packaging
		(mm)	(inch)	(mm)	(inch)		
OD	(Max)	46.74	1.840	47.60	1.874	Black	Box Qty = 72 pcs
ID	(min)	24.13	0.950	23.30	0.917		
HT	(max)	18.03	0.710	18.92	0.745		

Physical Characteristics

Cross Section (A)	Path Length (l)	Window Area (Wa)	Volume (V)	Breakdown Voltage (Vac)
1.990 cm ²	10.74 cm	4.27 cm ²	21.373 cm ³	1,000
0.308 in ²	4.23 in	842,708 cmil	1.304 in ³	

Winding Information

0% Winding length/turn (cm)		
6.214		
40% winding factor Surface Area (cm ²)		
96.50		
40% Wound Di.(mm)		
OD	ID	HT
53.30	15.26	25.79

For Your Reference Only

Typical DC Bias Performance

