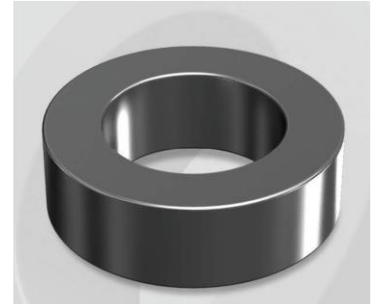


CM330147G

Electrical Characteristics

Material	Permeability (μ)	AL \pm 8% (nH/N ²)	DCB (% min) @ 20 Oe	Coreloss (mW/cm ² , max) @ 50kHz, 1000G
MPP	147	150	77.28	290

OD : 330



Core Dimensions

Dimensions		Uncoated		Coated		Color	Packaging
		(mm)	(inch)	(mm)	(inch)		
OD	(Max)	33.02	1.300	33.83	1.332	Black	Box Qty = 240 pcs
ID	(min)	19.94	0.785	19.30	0.760		
HT	(max)	10.67	0.420	11.61	0.457		

Physical Characteristics

Cross Section (A)	Path Length (l)	Window Area (Wa)	Volume (V)	Breakdown Voltage (Vac)
0.672 cm ²	8.15 cm	2.93 cm ²	5.4768 cm ³	1,000
0.1042 in ²	3.21 in	578,251 cmil	0.3342 in ³	

Winding Information

0% Winding length/turn (cm)		
3.775		
40% winding factor Surface Area (cm ²)		
49.01		
40% Wound Di.(mm)		
OD	ID	HT
38.69	12.64	17.37

For Your Reference Only

Typical DC Bias Performance

