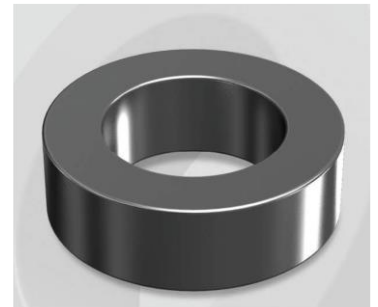


CH777125G

Electrical Characteristics

Material	Permeability (μ)	AL \pm 8% (nH/N ²)	DCB (% min) @ 20 Oe	Coreloss (mW/cm ³ , max) @ 50kHz, 500G
High Flux	125	142	84.64	80

OD : 777



Core Dimensions

Dimensions		Uncoated		Coated		Color	Packaging
		(mm)	(inch)	(mm)	(inch)		
OD	(Max)	77.80	3.063	78.90	3.106	Black	Box Qty = 40 pcs
ID	(min)	49.23	1.938	48.00	1.890		
HT	(max)	12.70	0.500	13.97	0.550		

Physical Characteristics

Cross Section (A)	Path Length (l)	Window Area (Wa)	Volume (V)	Breakdown Voltage (Vac)
1.770 cm ²	20.00 cm	17.99 cm ²	35.4000 cm ³	1,000
0.27435 in ²	7.874 in	3,550,424 cmil	2.1601 in ³	

Winding Information

0% Winding length/turn (cm)		
5.884		
40% winding factor Surface Area (cm ²)		
224.42		
40% Wound Di.(mm)		
OD	ID	HT
91.14	31.33	28.42

For Your Reference Only

Typical DC Bias Performance

