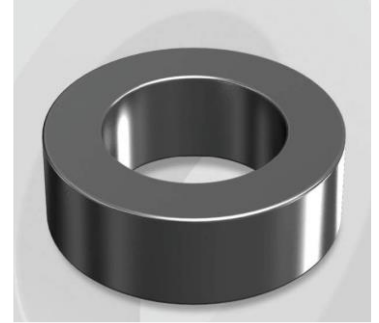


CH740060G

Electrical Characteristics

Material	Permeability (μ)	AL ± 8% (nH/N ²)	DCB (% min) @ 50 Oe	Coreloss (mW/cm ² , max) @50kHz, 300G
High Flux	60	206	82.8	23

OD : 740



Core Dimensions

Dimensions		Uncoated		Coated		Color	Packaging
		(mm)	(inch)	(mm)	(inch)		
OD	(Max)	74.10	2.917	75.20	2.961	Black	Box Qty = 15 pcs
ID	(min)	45.30	1.783	44.07	1.735		
HT	(max)	35.00	1.378	36.27	1.428		

Physical Characteristics

Cross Section (A)	Path Length (ℓ)	Window Area (Wa)	Volume (V)	Breakdown Voltage (Vac)
5.04 cm ²	18.38 cm	15.25 cm ²	92.640 cm ³	1,000
0.781 in ²	7.24 in	3,009,310 cmil	5.653 in ³	

Winding Information

AWG Wire No. Dia. (cm)	Single Layer Turn Rdc. (Ω)	AWG Wire No. Dia. (cm)	Single Layer Turn Rdc. (Ω)	Winding length/turn (cm)				
10 0.267	N-A	19 0.0980	N-A	10.367				
11 0.238		40% winding factor Surface Area (cm ²)						
12 0.213		283.09						
13 0.190		40% Wound Di.(mm)						
14 0.171		OD ID HT						
15 0.153		86.36 28.85 49.46						
16 0.137								
17 0.122								
18 0.109								

Typical DC Bias Performance

