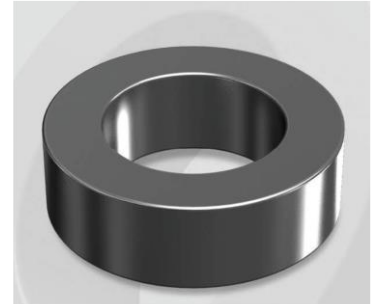


CH467026G

Electrical Characteristics

Material	Permeability (μ)	AL \pm 8% (nH/N ²)	DCB (% min) @ 200 Oe	Coreloss (mW/cm ² , max) @ 50kHz, 300G
High Flux	26	59	69.00	24

OD : 467



Core Dimensions

Dimensions		Uncoated		Coated		Color	Packaging
		(mm)	(inch)	(mm)	(inch)		
OD	(Max)	46.74	1.840	47.60	1.874	Black	Box Qty = 72 pcs
ID	(min)	24.13	0.950	23.30	0.917		
HT	(max)	18.03	0.710	18.92	0.745		

Physical Characteristics

Cross Section (A)	Path Length (ℓ)	Window Area (Wa)	Volume (V)	Breakdown Voltage (Vac)
1.990 cm ²	10.74 cm	4.27 cm ²	21.3726 cm ³	1,000
0.30845 in ²	4.228 in	842,708 cmil	1.3042 in ³	

Winding Information

0% Winding length/turn (cm)		
6.214		
40% winding factor Surface Area (cm ²)		
96.50		
40% Wound Di.(mm)		
OD	ID	HT
53.30	15.26	25.79

For Your Reference Only

Typical DC Bias Performance

